

AMPLIFIED MIDDLE PRESSURE SENSORS

0.3 psi to 15 psi Pressure Sensors

Industrial Temperature Grade with Voltage Reference



Features

- 0 to 0.3 psi to 0 to 15 psi Pressure Ranges
- Fixed 4V Output
- Temperature Compensated (-25C to 85C)
- Calibrated Zero and Span

Applications

- Medical Instrumentation
- Environmental Controls
- HVAC

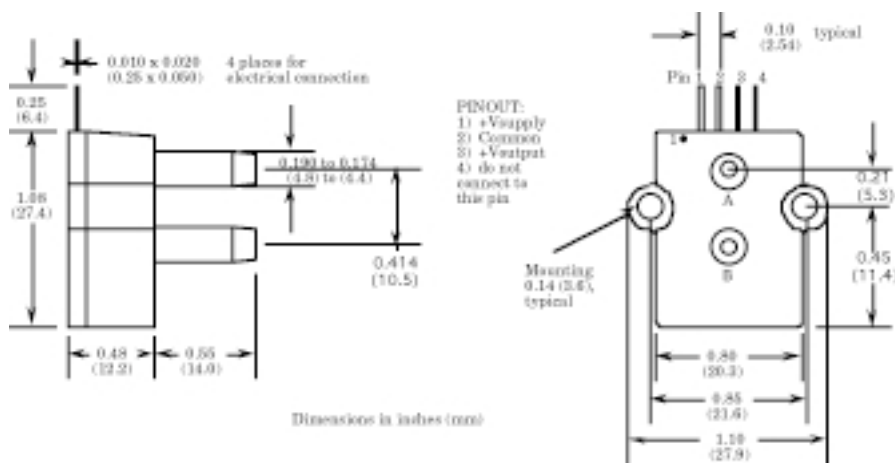
General Description

The Amplified line of middle pressure sensors is based upon a proprietary package technology to reduce errors. This model provides a fixed 4-volt output with superior output characteristics. The sensor housing has been designed specifically to reduce package induced parasitic stress and strain. In addition the sensor utilizes a silicon, micromachined, stress concentration enhanced structure to provide a very linear output to measured pressure.

These calibrated and temperature compensated sensors give an accurate and stable output over a wide temperature range. Each sensor is internally compensated using an ASIC compensation technique. This series is intended for use with non-corrosive, non-ionic working fluids such as air, dry gases and the like.

The output of the device is ratiometric to the supply voltage and operation from any D.C. supply voltage of +5.5V up to +16 V is acceptable.

Physical Dimensions



Pressure Sensor Ratings

| | |
|---|-----------------|
| Supply Voltage VS | +5.5 to +16 Vdc |
| Common-mode pressure | -10 to +10 psig |
| Lead Temperature, max (soldering 2-4 sec.) | 250°C |

Environmental Specifications

| | |
|---------------------------|---------------------------------|
| Temperature Ranges | |
| Compensated | -25 to 85° C |
| Operating | -40 to 125° C |
| Storage | -40 to 125° C |
| Humidity Limits | 0 to 95% RH (non condensing) |

Standard Pressure Ranges

| Part Number | Operating Pressure | Nominal Span | Proof Pressure | Burst Pressure |
|------------------------|--------------------|--------------|----------------|----------------|
| 0.3 PSI-D-4V-PRIME-REF | ±0.3 PSI | 4 V | 5 PSI | 10 PSI |
| 0.3 PSI-G-4V-PRIME-REF | 0 - 0.3 PSI | 4 V | 5 PSI | 10 PSI |
| 1 PSI-D-4V-PRIME-REF | ±1 PSI | 4 V | 5 PSI | 10 PSI |
| 1 PSI-G-4V-PRIME-REF | 0 - 1 PSI | 4 V | 5 PSI | 10 PSI |
| 5 PSI-D-4V-PRIME-REF | ± 5 PSI | 4 V | 15 PSI | 30 PSI |
| 5 PSI-G-4V-PRIME-REF | 0 - 5 PSI | 4 V | 15 PSI | 30 PSI |
| BARO-A-4V-PRIME-REF | 600 - 1100 mbar | 4 V | 45 PSI | 60 PSI |
| 15 PSI-D-4V-PRIME-REF | ±15 PSI | 4 V | 45 PSI | 60 PSI |
| 15 PSI-G-4V-PRIME-REF | 0 - 15 PSIG | 4 V | 45 PSI | 60 PSI |

Performance Characteristics for 0.3 PSI-D-4V-PRIME-REF

| Parameter, note 1 | Minimum | Nominal | Maximum | Units |
|--|---------|---------|---------|-------|
| Operating Range, differential pressure | | ±0.3 | | PSI |
| Output Span, note 5 | ±1.90 | ±2.0 | ±2.10 | volt |
| Offset Voltage @ zero differential pressure | 2.15 | 2.25 | 2.35 | volt |
| Offset Temperature Shift (-25°C to 85°C), note 2 | | | ±40 | mvolt |
| Linearity, hysteresis error, note 4 | | 0.05 | 0.25 | %fs |
| Span Shift (-25°C to 85°C), note 2 | | | ±2 | %span |

Performance Characteristics for 0.3 PSI-G-4V-PRIME-REF

| Parameter, note 1 | Minimum | Nominal | Maximum | Units |
|--|---------|---------|---------|-------|
| Operating Range, gage pressure | | 0.3 | | PSI |
| Output Span, note 5 | 3.90 | 4.0 | 4.10 | volt |
| Offset Voltage @ zero pressure | 0.15 | 0.25 | 0.35 | volt |
| Offset Temperature Shift (-25°C to 85°C), note 2 | | | ±40 | mvolt |
| Linearity, hysteresis error, note 4 | | 0.05 | 0.25 | %fs |
| Span Shift (-25°C to 85°C), note 2 | | | ±2 | %span |

Performance Characteristics for 1 PSI-D-4V-PRIME-REF

| Parameter, note 1 | Minimum | Nominal | Maximum | Units |
|--|---------|---------|---------|-------|
| Operating Range, differential pressure | | ±1.0 | | PSI |
| Output Span, note 5 | ±1.90 | ±2.0 | ±2.10 | volt |
| Offset Voltage @ zero differential pressure | 2.15 | 2.25 | 2.35 | volt |
| Offset Temperature Shift (-25°C to 85°C), note 2 | | | ±40 | mvolt |
| Linearity, hysteresis error, note 4 | | 0.05 | 0.25 | %fs |
| Span Shift (-25°C to 85°C), note 2 | | | ±1 | %span |

Performance Characteristics for: 1 PSI-G-4V-PIRME-REF

| Parameter, NOTE 1 | Minimum | Nominal | Maximum | Units |
|--|---------|---------|---------|-------|
| Operating Range, gage pressure | | 1.0 | | PSI |
| Output Span, NOTE 5 | 3.90 | 4.0 | 4.10 | volt |
| Offset Voltage @ zero pressure | 0.15 | 0.25 | 0.35 | volt |
| Offset Temperature Shift (-25°C to 85°C), note 2 | | | ±40 | mvolt |
| Linearity, hysteresis error, note 4 | | 0.05 | 0.25 | %fs |
| Span Shift (-25°C to 85°C), note 2 | | | ±1 | %span |

Performance Characteristics for: 5 PSI-D-4V-PRIME-REF

| Parameter, NOTE 1 | Minimum | Nominal | Maximum | Units |
|--|---------|---------|---------|-------|
| Operating Range, differential pressure | | ±5.0 | | PSI |
| Output Span, NOTE 5 | ±1.90 | ±2.0 | ±2.10 | volt |
| Offset Voltage @ zero differential pressure | 2.15 | 2.25 | 2.35 | volt |
| Offset Temperature Shift (-25°C to 85°C), note 2 | | | ±20 | mvolt |
| Linearity, hysteresis error, note 4 | | 0.05 | 0.25 | %fs |
| Span Shift (-25°C to 85°C), note 2 | | | ±1 | %span |

Performance Characteristics for: 5 PSI-G-4V-PRIME-REF

| Parameter, NOTE 1 | Minimum | Nominal | Maximum | Units |
|--|---------|---------|---------|-------|
| Operating Range, gage pressure | | 5.0 | | PSI |
| Output Span, NOTE 5 | 3.90 | 4.0 | 4.10 | volt |
| Offset Voltage @ zero pressure | 0.15 | 0.25 | 0.35 | volt |
| Offset Temperature Shift (-25°C to 85°C), note 2 | | | ±20 | mvolt |
| Linearity, hysteresis error, note 4 | | ±5 | 0.25 | %fs |
| Span Shift (-25°C to 85°C), note 2 | | 0.05 | ±1 | %span |



Performance Characteristics for BARO-A-4V-PRIME-REF

| Parameter, note 1 | Minimum | Nominal | Maximum | Units |
|--|---------|---------|---------|-------|
| Operating Range, absolute pressure | 600 | | 1100 | mBar |
| Output Span, note 5 | 3.90 | 4.0 | 4.10 | volt |
| Offset Voltage @ zero pressure | 0.15 | 0.25 | 0.35 | volt |
| Offset Temperature Shift (-25°C to 85°C), note 2 | | | ±20 | mvolt |
| Linearity, hysteresis error, note 4 | | 0.05 | 0.25 | %fs |
| Span Shift (-25°C to 85°C), note 2 | | | ±1 | %span |

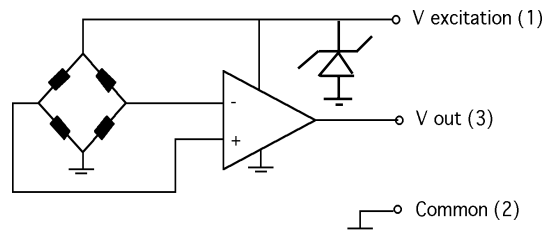
Performance Characteristics for 15 PSI-D-4V-PRIME-REF

| Parameter, note 1 | Minimum | Nominal | Maximum | Units |
|--|---------|---------|---------|-------|
| Operating Range, differential pressure | | ±15.0 | | PSI |
| Output Span, note 5 | ±1.90 | ±2.0 | ±2.10 | volt |
| Offset Voltage @ zero differential pressure | 2.15 | 2.25 | 2.35 | volt |
| Offset Temperature Shift (-25°C to 85°C), note 2 | | | ±20 | mvolt |
| Linearity, hysteresis error, note 4 | | 0.05 | 0.25 | %fs |
| Span Shift (-25°C to 85°C), note 2 | | | ±1 | %span |

Performance Characteristics for 15 PSI-G-4V-PRIME-REF

| Parameter, note 1 | Minimum | Nominal | Maximum | Units |
|--|---------|---------|---------|-------|
| Operating Range, gage pressure | | 15.0 | | PSI |
| Output Span, note 5 | 3.90 | 4.0 | 4.10 | volt |
| Offset Voltage @ zero pressure | 0.15 | 0.25 | 0.35 | volt |
| Offset Temperature Shift (-25°C to 85°C), note 2 | | | ±20 | mvolt |
| Linearity, hysteresis error, note 4 | | 0.05 | 0.25 | %fs |
| Span Shift (-25°C to 85°C), note 2 | | | ±1 | %span |

Equivalent Circuit



Specification Notes

NOTE 1: ALL PARAMETERS ARE MEASURED AT 12.0 VOLT EXCITATION, FOR THE NOMINAL FULL SCALE PRESSURE AND ROOM TEMPERATURE UNLESS OTHERWISE SPECIFIED. PRESSURE MEASUREMENTS ARE WITH POSITIVE PRESSURE APPLIED TO PORT B.

NOTE 2: SHIFT IS RELATIVE TO 25°C.

NOTE 3: SHIFT IS WITHIN THE FIRST HOUR OF EXCITATION APPLIED TO THE DEVICE.

NOTE 4: MEASURED AT ONE-HALF FULL SCALE RATED PRESSURE USING BEST STRAIGHT LINE CURVE FIT.

NOTE 5: THE VOLTAGE ADDED TO THE OFFSET VOLTAGE AT FULL SCALE PRESSURE. NOMINALLY THE OUTPUT VOLTAGE RANGE IS 0.25 TO 4.25 VOLTS FOR MINUS TO PLUS FULL SCALE PRESSURE.

All Sensors reserves the right to make changes to any products herein. All Sensors does not assume any liability arising out of the application or use of any product or circuit described herein, neither does it convey any license under its patent rights nor the rights of others.